

---

---

# TELINK-SNMP1



User Manual  
Volume 2

## Appendix A Piani di montaggio, schemi elettrici, liste componenti / *Component layouts, schematics, bills of material*

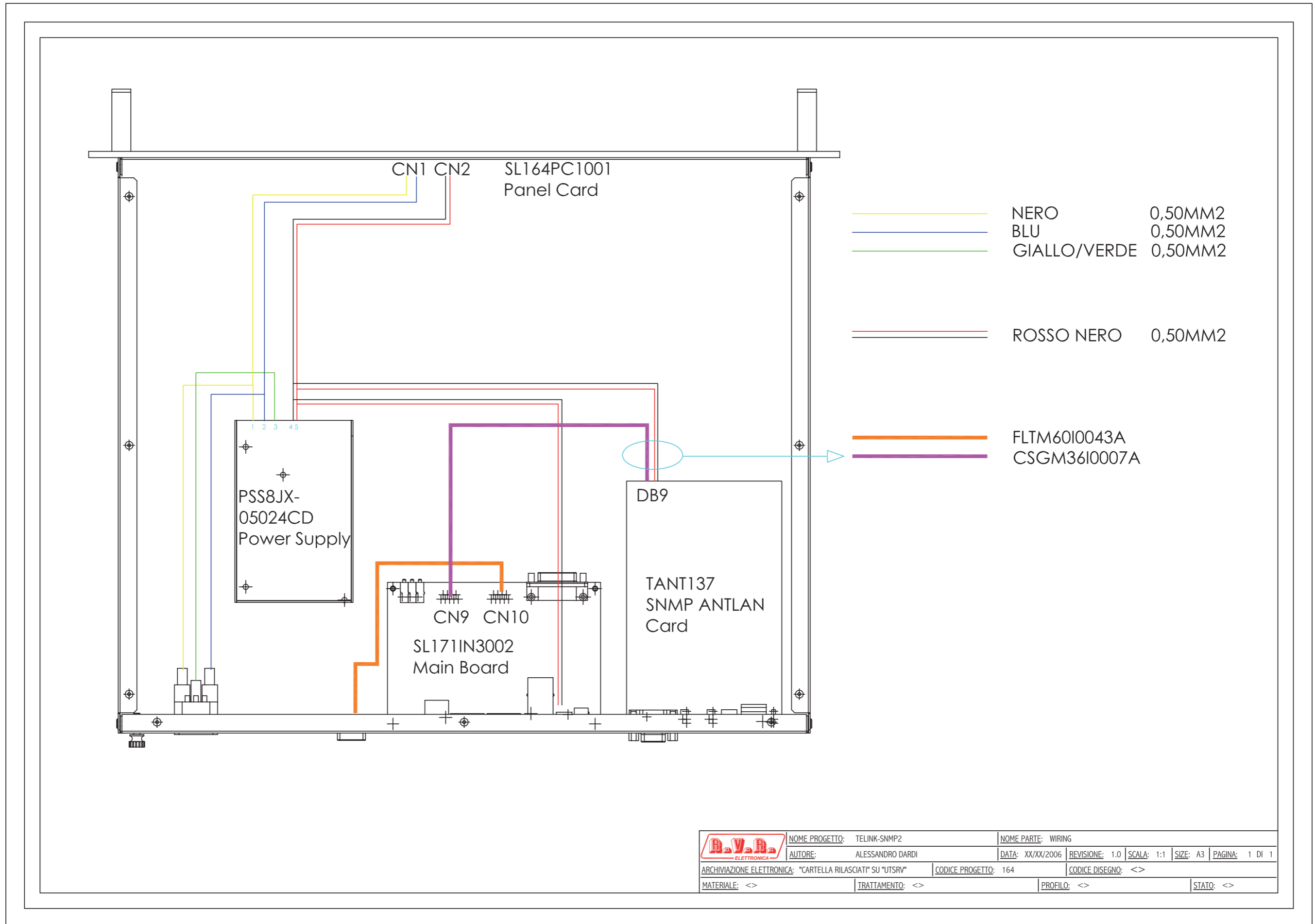
Questa parte del manuale contiene i dettagli tecnici riguardanti la costruzione delle singole schede componenti il TELINK-SNMP1. L'appendice è composta dalle seguenti sezioni:

*This part of the manual contains the technical details about the different boards of the TELINK-SNMP1. This appendix is composed of the following sections:*

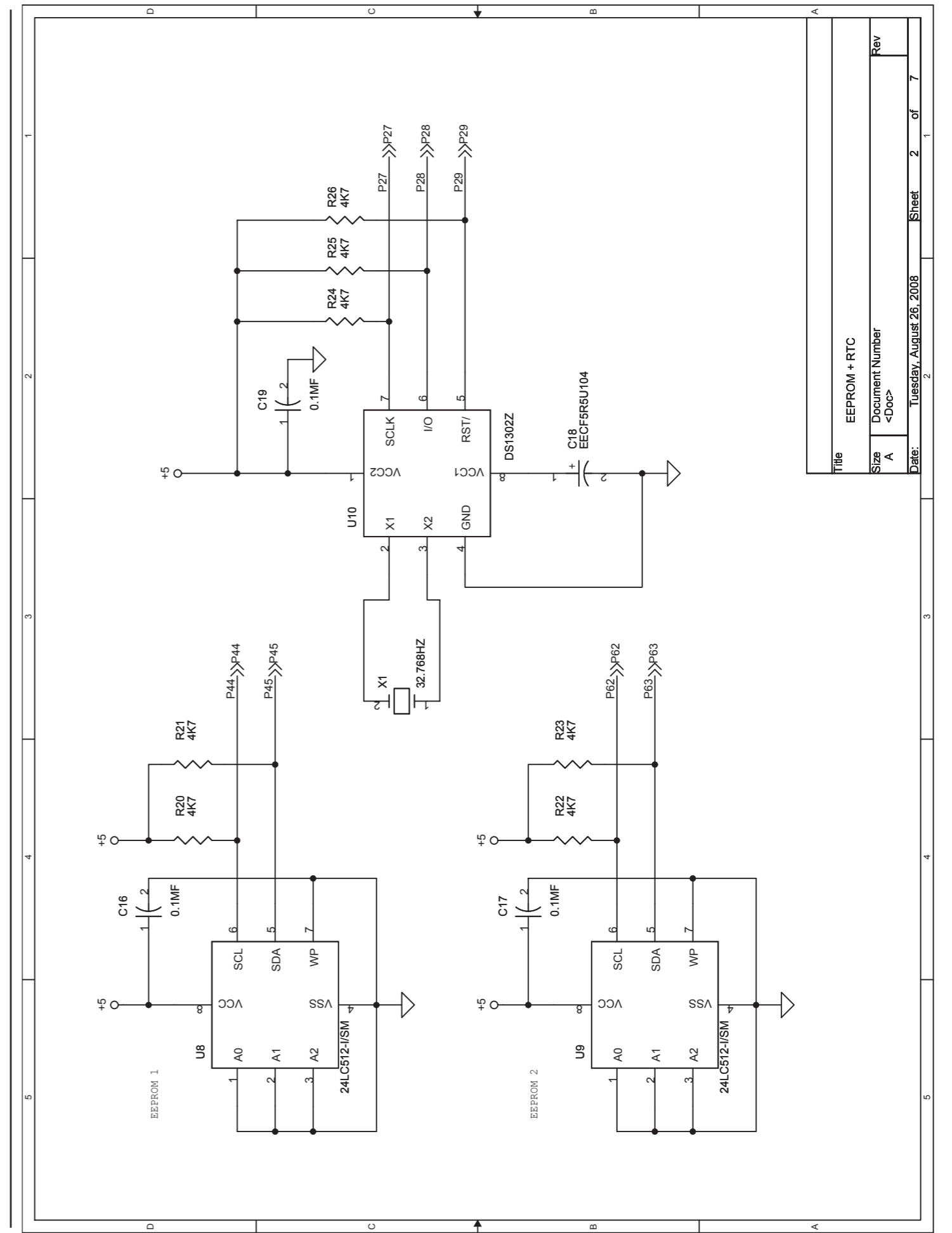
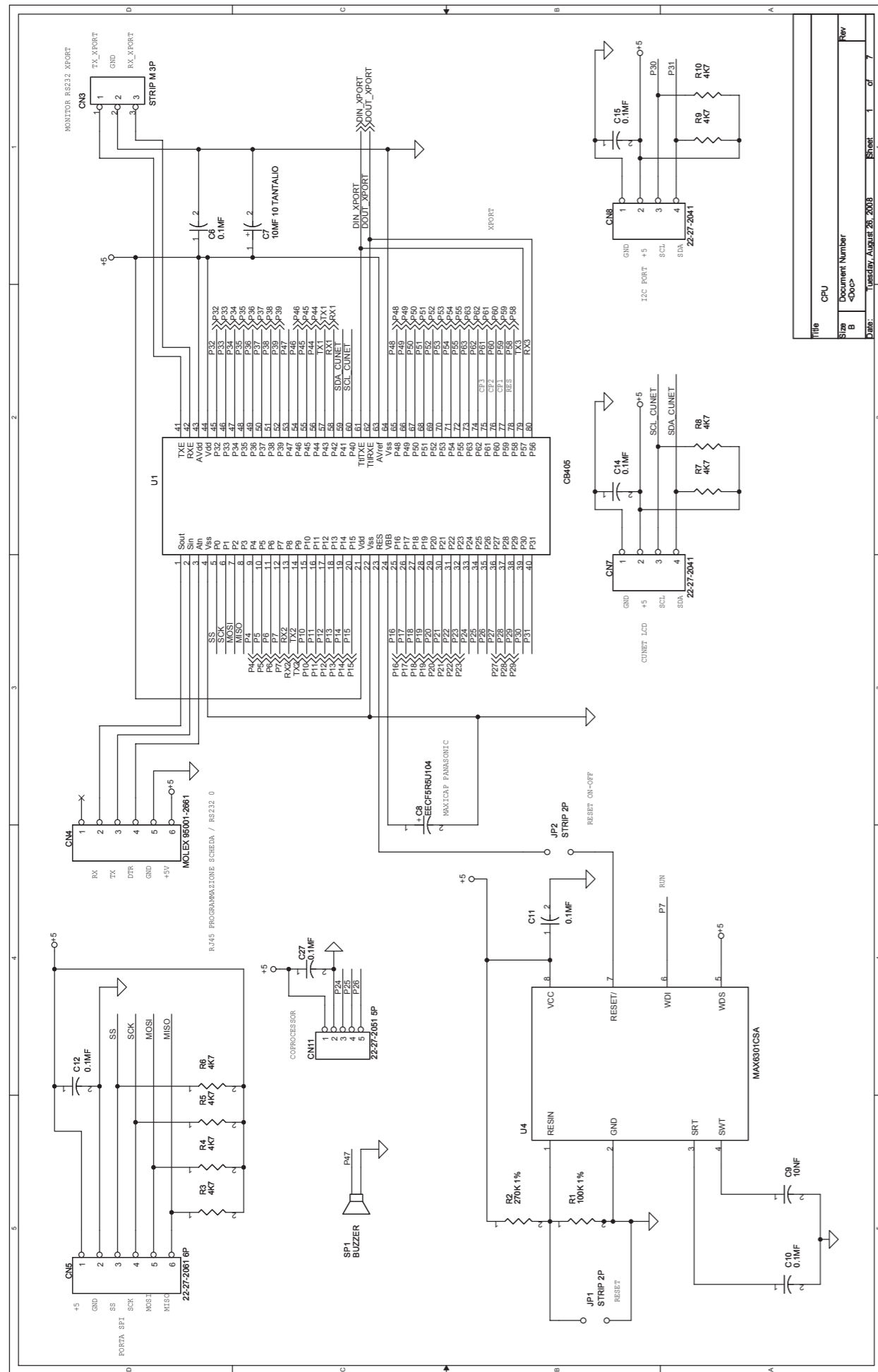
Description	RVR Code	Vers.	Page
Wiring diagrams	/	1.0	1
Main Board	SL171IN3002	1.0	2
Panel Card	SL164PC1001	1.0	8
SNMP ANTLAN card	TANT137		
Power Supply	PSS8JX-05024CD		

### Document History

Date	Version	Reason	Code	Editor
25/03/09	1.0	First Release in A3 Format	N.D.	J.H. Berti

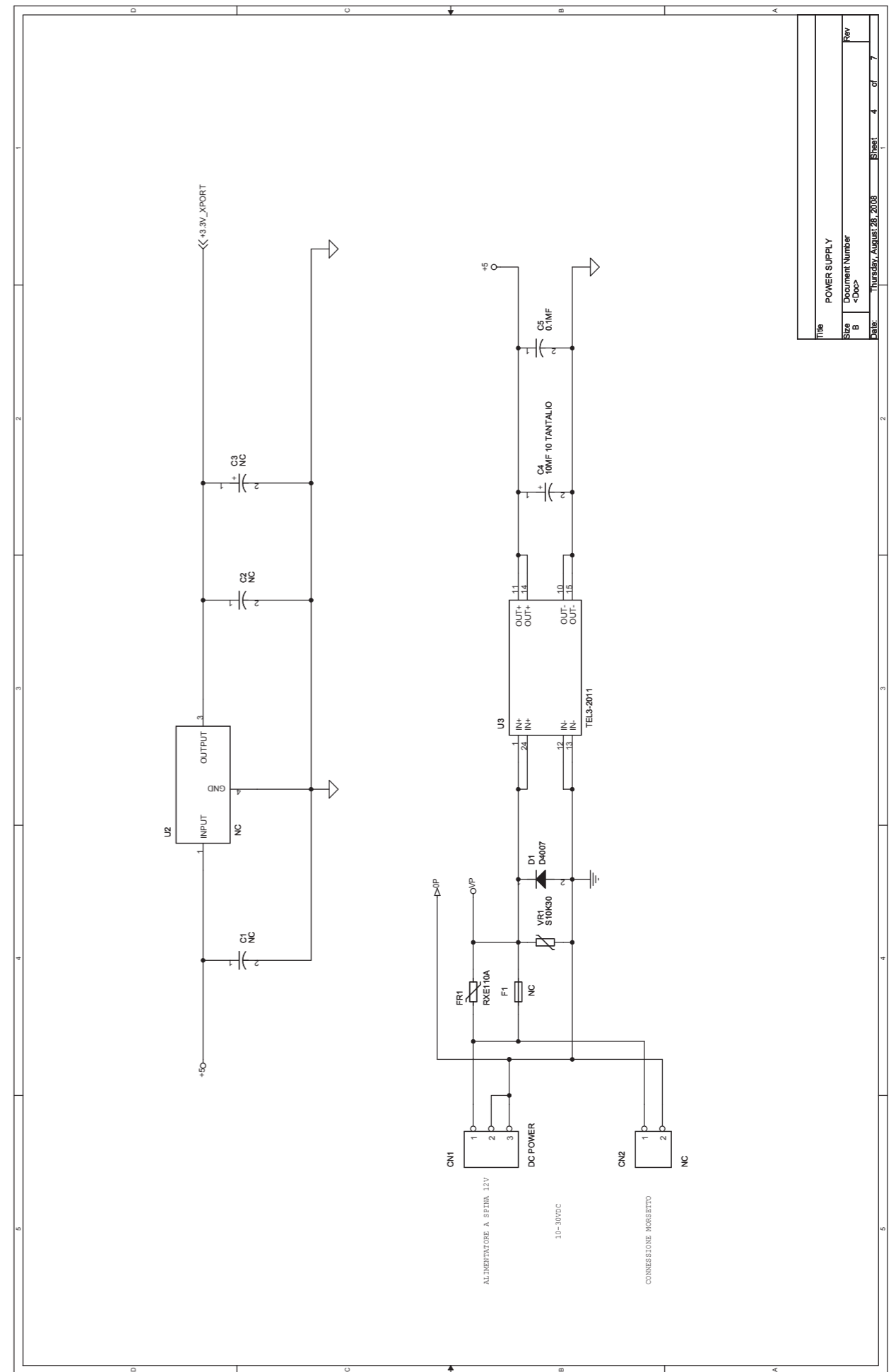
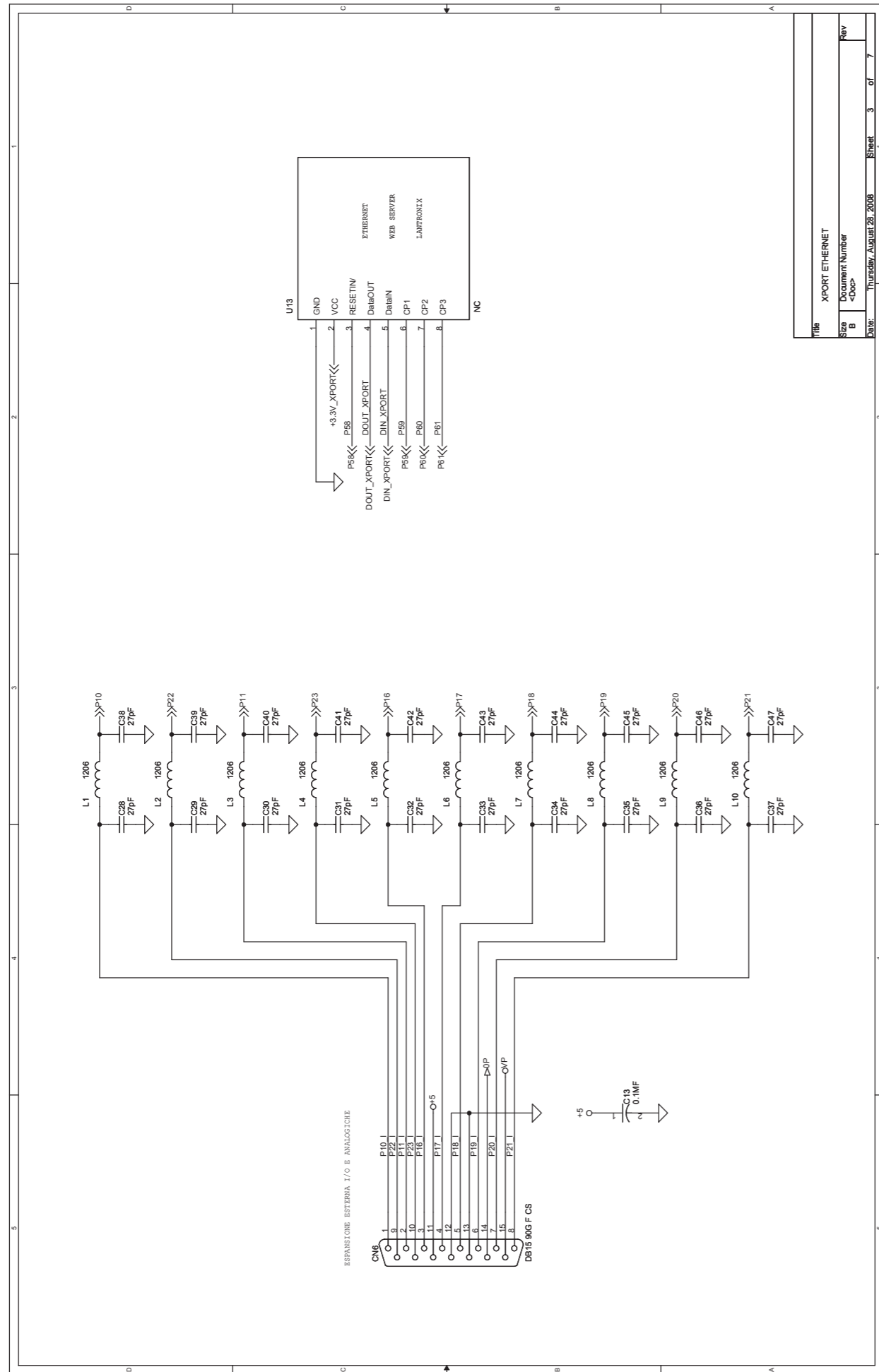


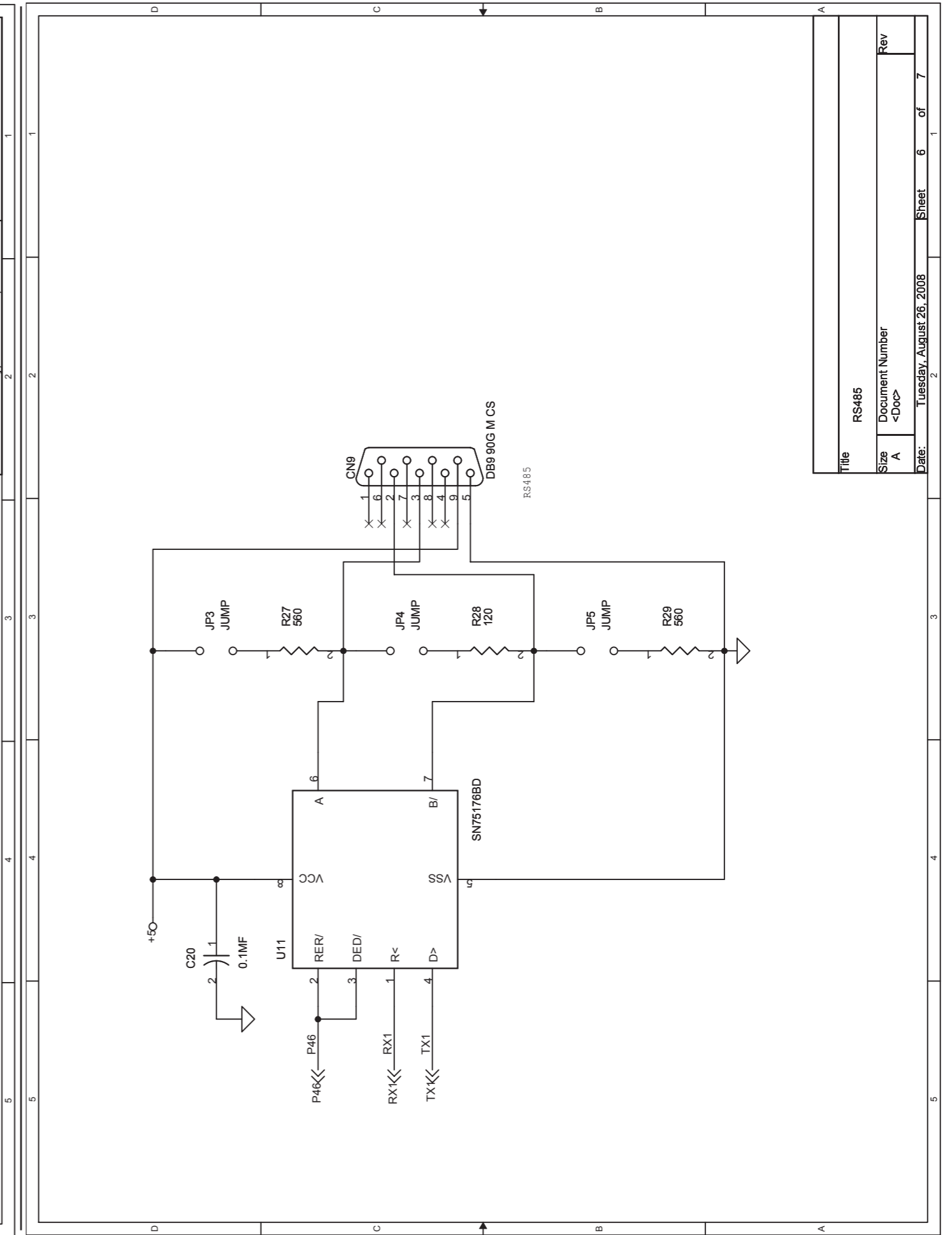
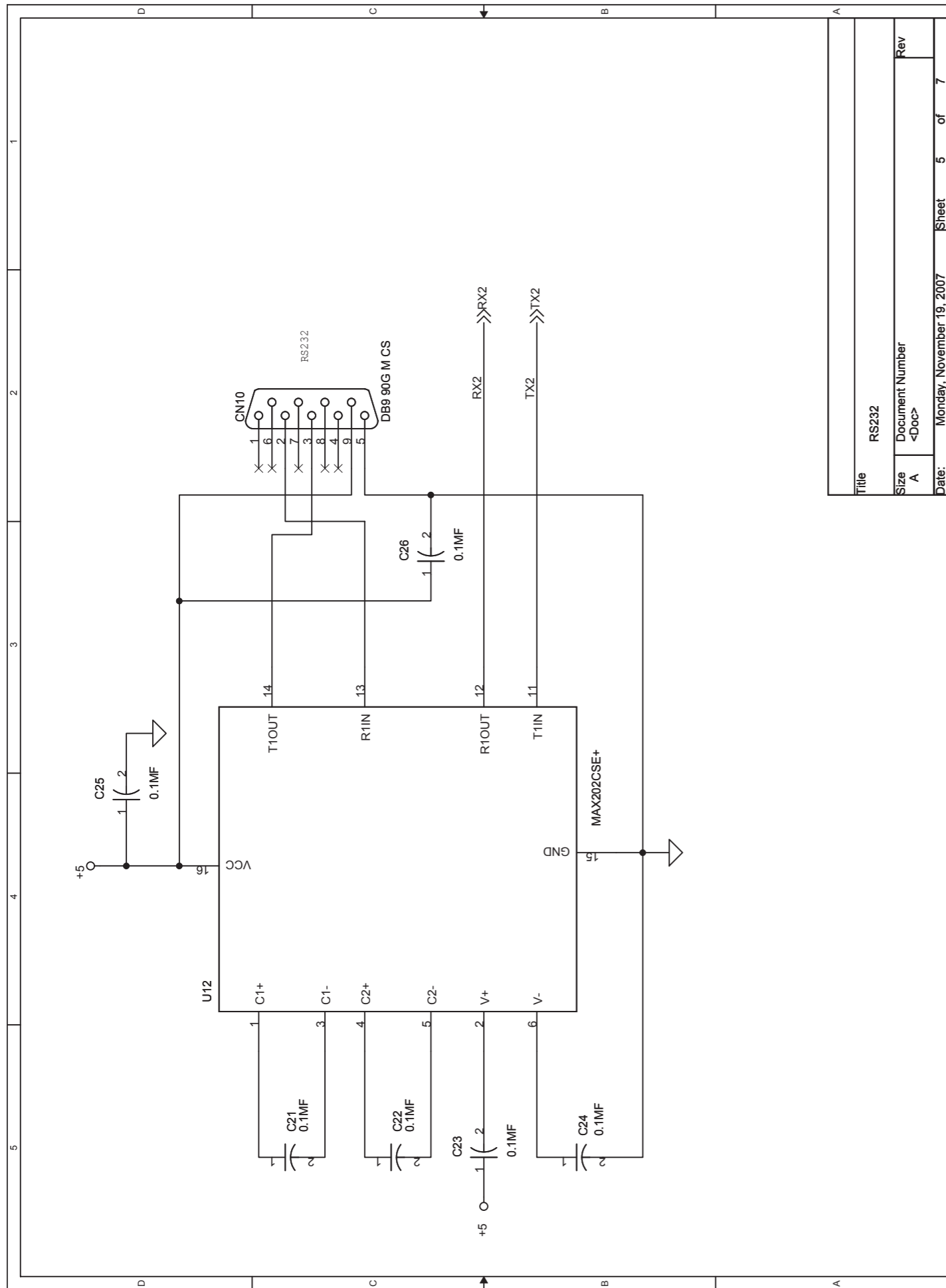
	NOME PROGETTO: TELINK-SNMP2	NOME PARTE: WIRING
	AUTORE: ALESSANDRO DARDI	DATA: XX/XX/2006   REVISIONE: 1.0   SCALA: 1:1   SIZE: A3   PAGINA: 1 DI 1
ARCHIVIAZIONE ELETTRONICA: "CARTELLA RILASCIATI" SU "UTSRV"	CODICE PROGETTO: 164	CODICE DISEGNO: <>
MATERIALE: <>	TRATTAMENTO: <>	PROFILO: <>   STATO: <>

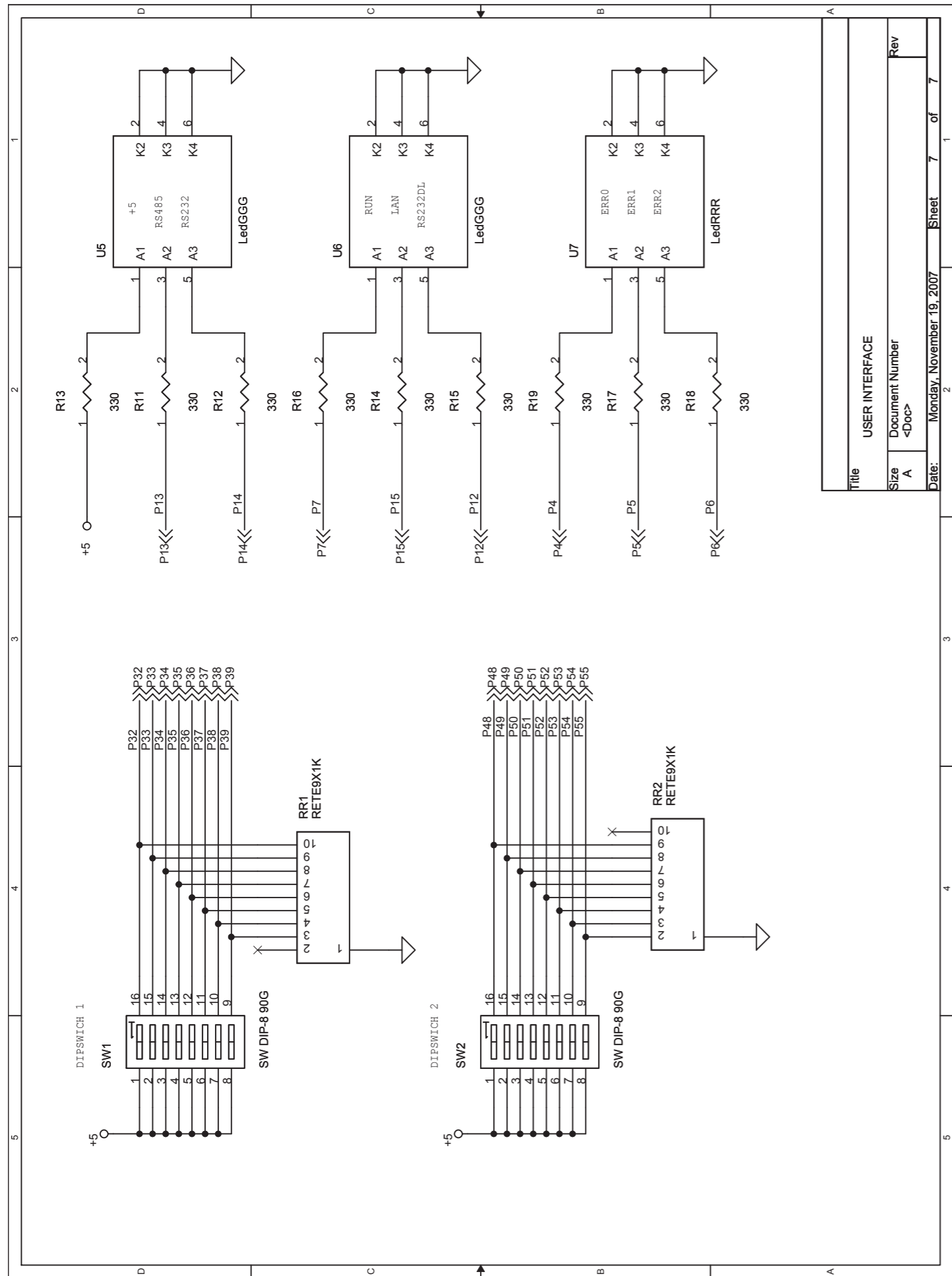


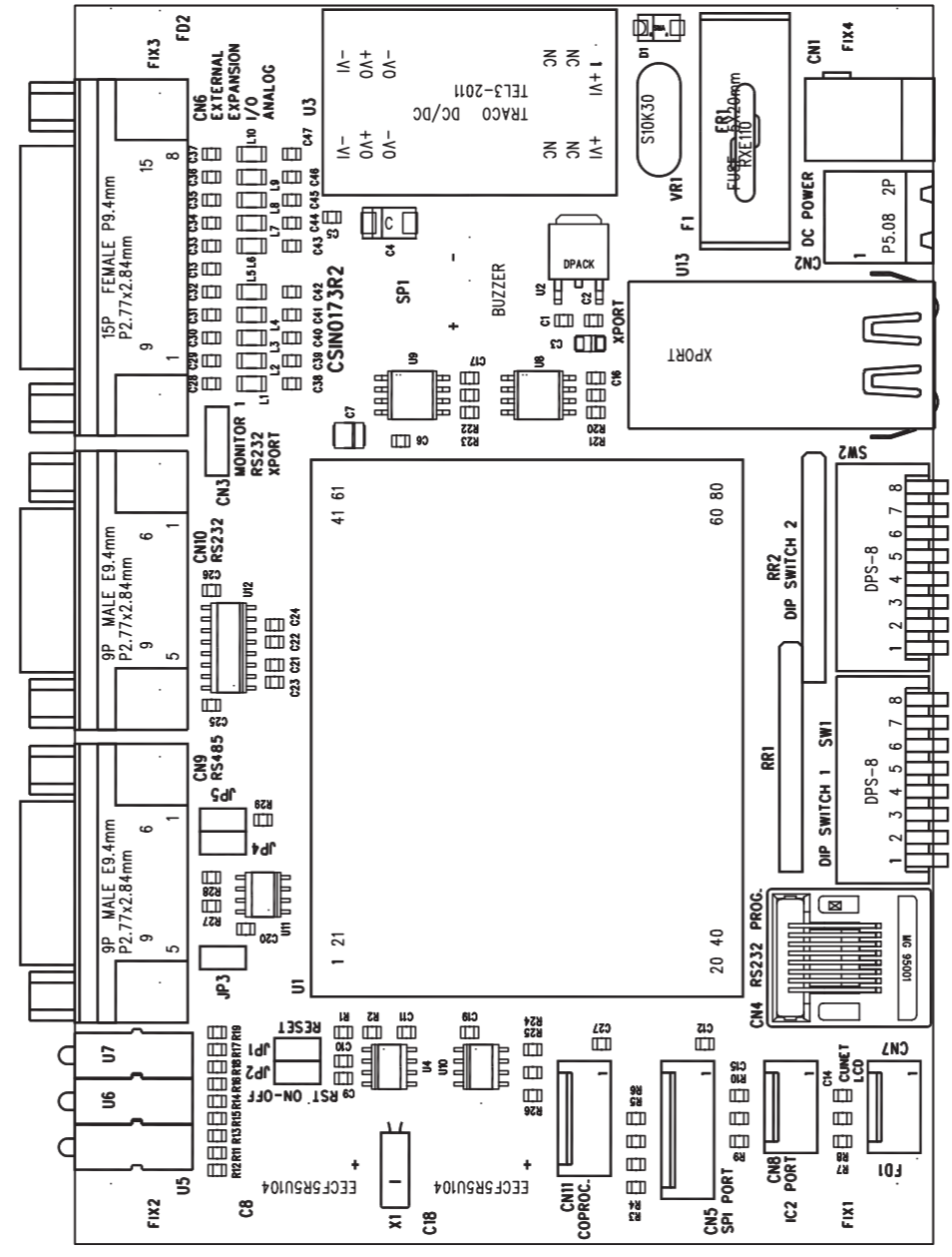
Title	CPU
Size	Docup
Document Number	
Rev	
Date	Tuesday, August 26, 2008
Sheet	7


Title	EEPROM + RTC
Size	A
Document Number	<Doc>
Rev	
Date	Tuesday, August 26, 2008
Sheet	2
of	7







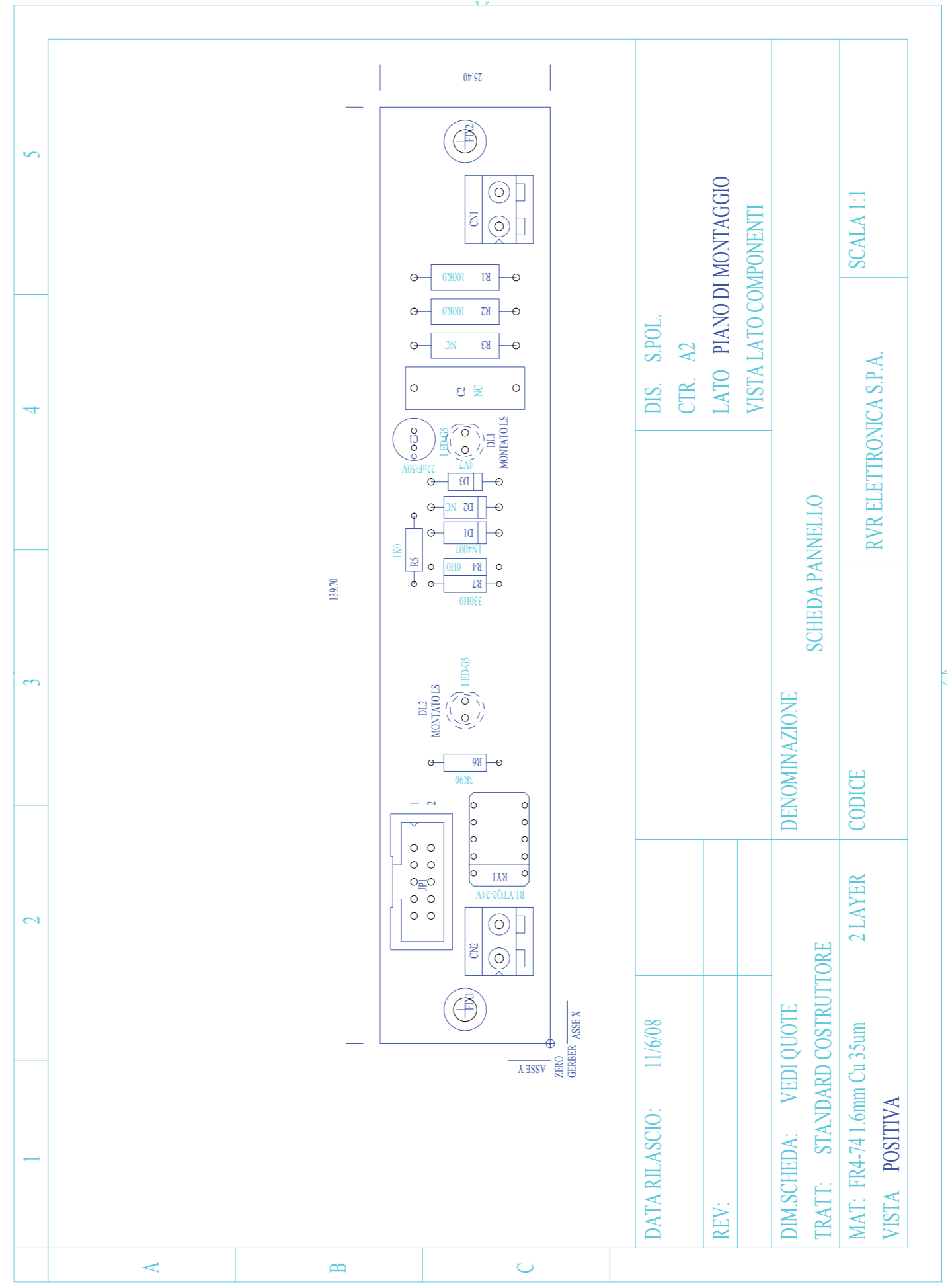
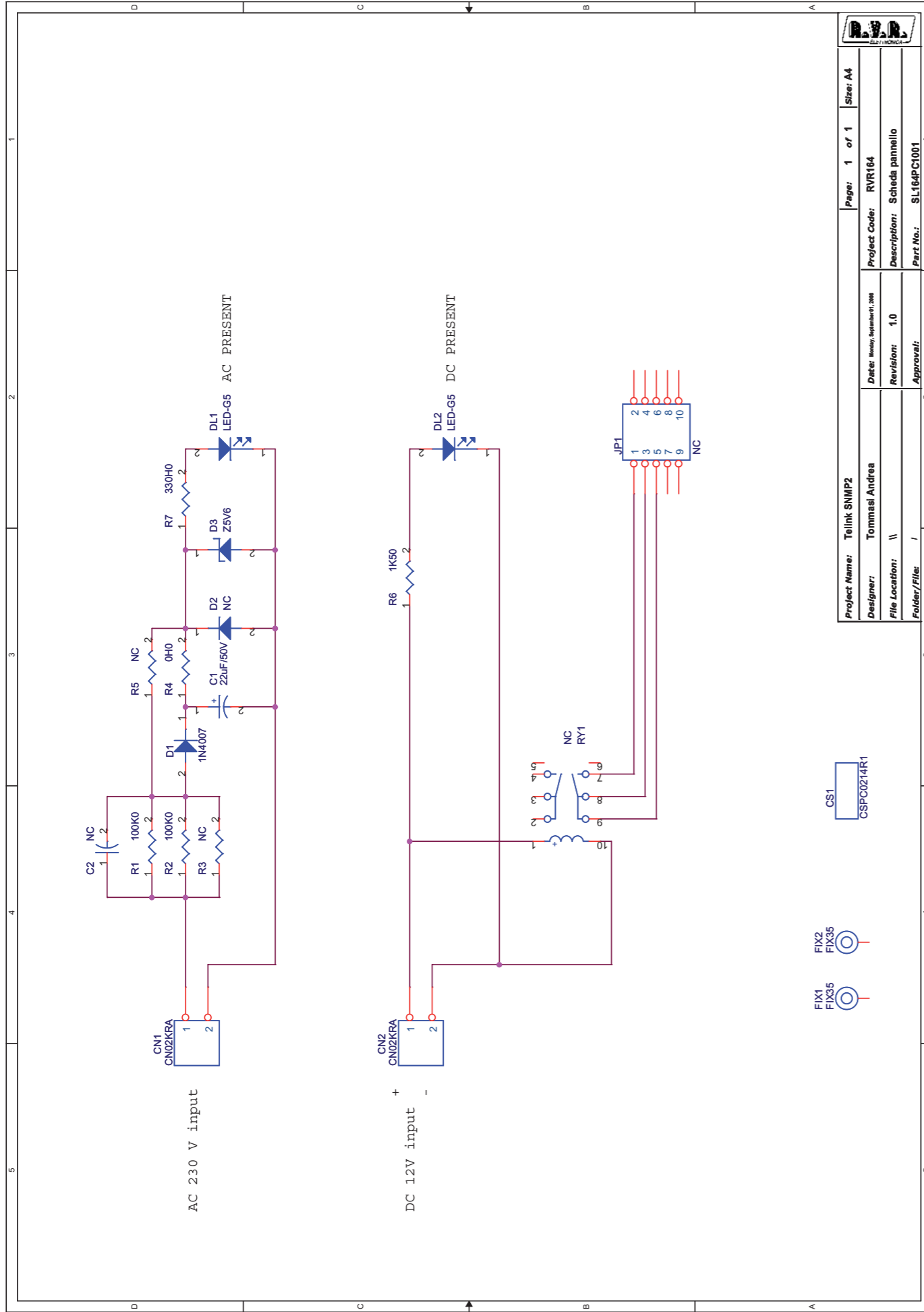


	NOME PROGETTO: TELINK	NOME PARTE: MAIN BOARD TELINK
AUTORE: P. TASSIN	DATA: 04/09/2008	REVISIONE: 1.0
ARCHIVIAZIONE ELETTRONICA: "CARTELLA RILASCIATI" SU "UTSRV"	CODICE PROGETTO: 171	CODICE DISEGNO: SL171IN1002
MATERIALE: <>	TRATTAMENTO: <>	PROFILO: <>
		STATO: ESECUTIVO
		SIZE: A4
		PAGINA: 1 DI 1



CPU Revised: Tuesday, August 26, 2008  
Revision: <RevCode>

Item	Quantity	Reference	Part
1	1	CN1	DC POWER
2	7	F1, C1, U2, CN2, C2, C3, U13	NC
3	1	CN3	STRIP M 3P
4	1	CN4	MOLEX 95001-2661
5	1	CN5	22-27-2061 6P
6	1	CN6	DB15 90G F CS
7	2	CN7, CN8	22-27-2041
8	2	CN9, CN10	DB9 90G M CS
9	1	CN11	22-27-2051 5P
10	2	C4, C7	10MF 10 TANTALIO
11	19	C5, C6, C10, C11, C12, C13, C14, C15, C16, C17, C19, C20, C21, C22, C23, C24, C25, C26, C27	0.1MF
12	2	C8, C18	EECF5R5U104
13	1	C9	10NF
14	20	C28, C29, C30, C31, C32, C33, C34, C35, C36, C37, C38, C39, C40, C41, C42, C43, C44, C45, C46, C47	27pF
15	1	D1	D4007
16	1	FR1	RXE110A
17	2	JP1, JP2	STRIP 2P
18	3	JP3, JP4, JP5	JUMP
19	10	L1, L2, L3, L4, L5, L6, L7, L8, L9, L10	1206
20	2	RR1, RR2	RETE9X1K
21	1	R1	100K 1%
22	1	R2	270K 1%
23	15	R3, R4, R5, R6, R7, R8, R9, R10, R20, R21, R22, R23, R24, R25, R26	4K7
24	9	R11, R12, R13, R14, R15, R16, R17, R18, R19	330
25	2	R27, R29	560
26	1	R28	120
27	1	SP1	BUZZER
28	2	SW1, SW2	SW DIP-8 90G
29	1	U1	CB405
30	1	U3	TEL3-2011
31	1	U4	MAX6301CSA
32	2	U5, U6	LedGGG
33	1	U7	LedRRR
34	2	U8, U9	24LC512-I/SM
35	1	U10	DS1302Z
36	1	U11	SN75176BD
37	1	U12	MAX202CSE+
38	1	VR1	S10K30
39	1	X1	32.768HZ



Scheda pannello Revised: Thursday, July 10, 2008  
SL164PC1001 Revision: 1.0

Telink SNMP2  
RVR164

Item	Quantity	Reference	Part	Description	Code
1	2	CN1,CN2	CN02KRA	Conn. tipo KRA a 2 poli	MORSKRA2
2	1	CS1	CSPC0214R1	Circuito stampato	CSPC0214R1
3	1	C1	22uF/50V	Cond. Elettr. Dia 6.5 P2.54	CEA226MA500V
4	1	C2	NC	Cond. Poliestere p 15mm	
5	2	DL1,DL2	LED-G5	LED Verde dia. 5mm	LEDV05
6	1	D1	1N4007	Diodo plastico DO41	DIS1N4007
7	1	D2	NC	Diodo plastico DO41	
8	1	D3	Z5V6	1/2W Zener Diode	DIZ5V61/2W
9	2	FIX1,FIX2	FIX35	Foro fissaggio 3.5mm	
10	1	JP1	NC	Connettore 10 poli Flat cs	
11	1	RY1	NC	Rele' TQ2	
12	2	R1,R2	100K0	Res. 2W	RSM002J0100K
13	1	R3	NC	Res. 2W	
14	1	R4	0H0	Res. 1/4W 1%	RSM1/4F0000H
15	1	R5	NC	Res. 1/4W 1%	
16	1	R6	1K50	Res. 1/4W 1%	RSM1/4F001K5
17	1	R7	330H0	Res. 1/4W 1%	RSM1/4F0330H