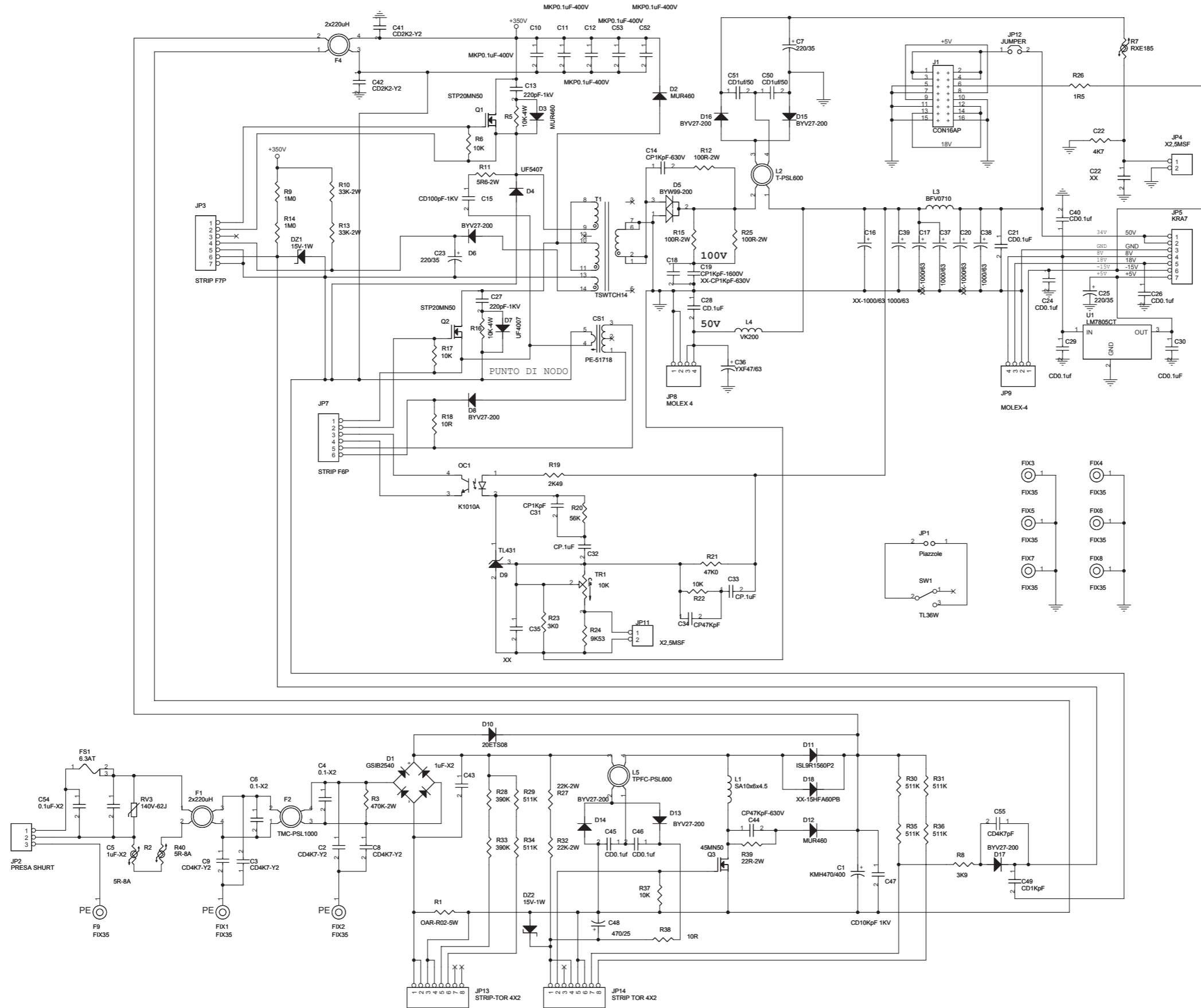
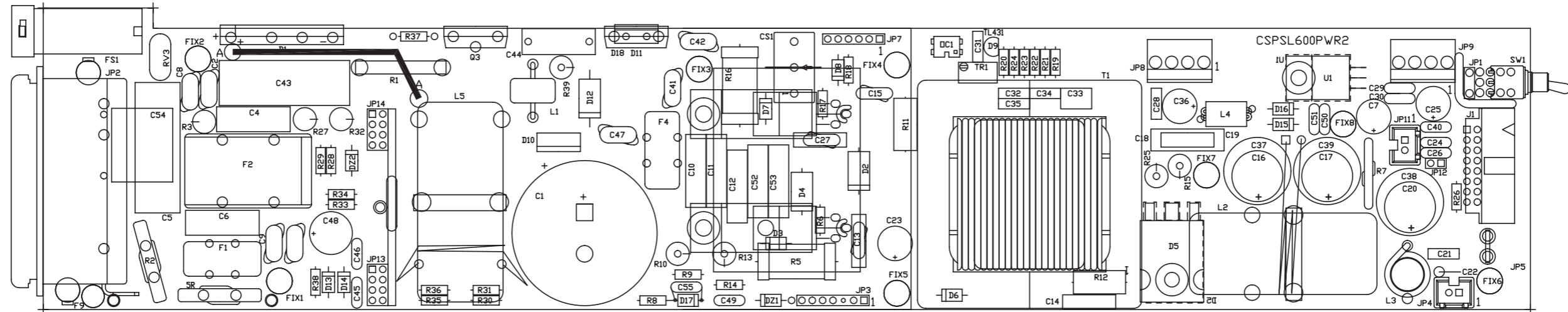


PSL600



Nome Progetto: TEX300-LCD		Pagina: 1 di 1		Sint: A3	
Autore: GP - REV.: J.BERTI		Data: 04/05/2005		Codice Progetto: 045	
Nome PC in Rete: \UTSRVA		Revisione: 1.0		Nome Parte: POWER PSL 300	
File/Cartella: PSL600_PWR_P2.DSN		Autorizzazione:		Codice: PSL300	



	NOME PROGETTO: TEX300-LCD	NOME PARTE: Main Card
	AUTORE: U.T. - rev.: J. Berti	DATA: 05/04/2006 REVISIONE: 1.0 SCALA: 1:1 SIZE: A3 PAGINA: 1 DI 1
ARCHIVIAZIONE ELETTRONICA: "CARTELLA PROGETTI" SU "UT_SRV"	CODICE PROGETTO: 045	CODICE DISEGNO: PSL600
MATERIALE: /	TRATTAMENTO: /	PROFILO: / STATO: /

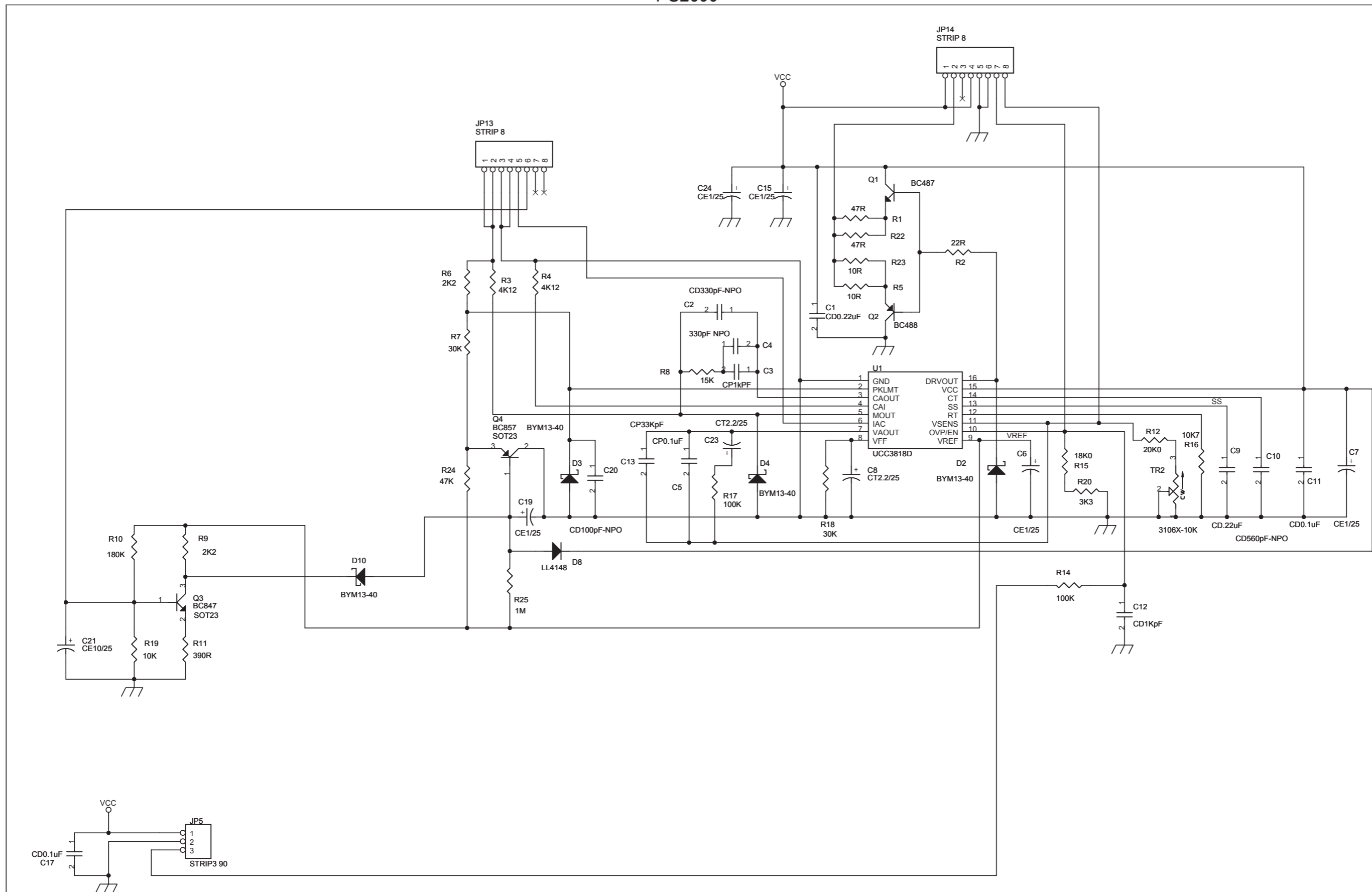
PSL600

Revised: Thursday, October 12, 2006
Revision:

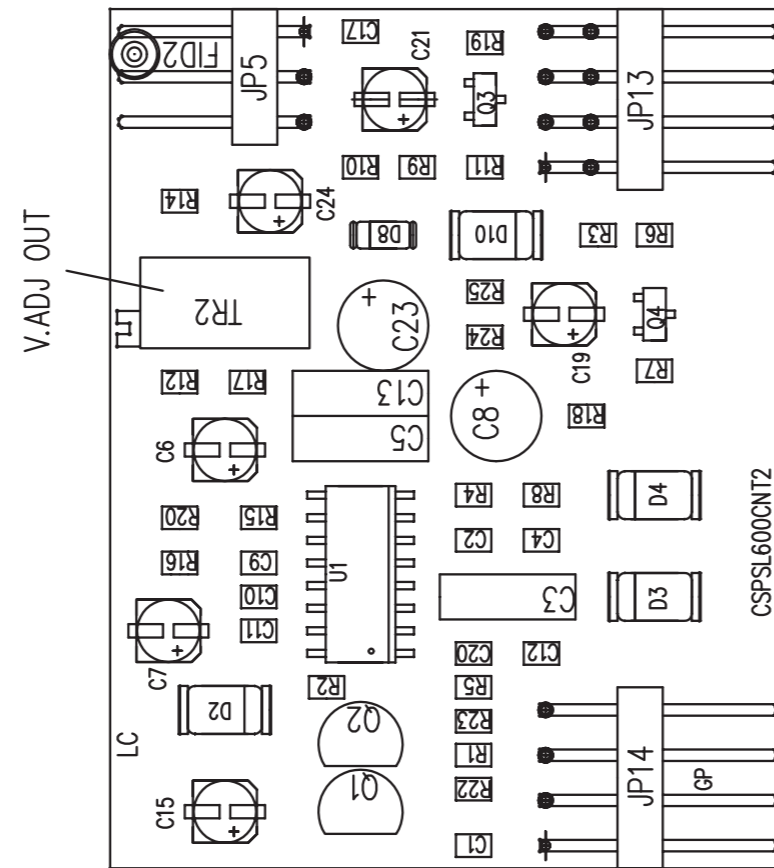
Item	Quantity	Reference	Part
1	1	CS1	PE-51718
2	1	C1	KMH470/400
3	4	C2, C3, C8, C9	CD4K7-Y2
4	2	C4, C6	0.1-X2
5	2	C5, C43	1uF-X2
6	3	C7, C23, C25	220/35
7	5	C10, C11, C12, C52, C53	MKP0.1uF-400V
8	2	C13, C27	220pF-1KV
9	1	C14	CP1KpF-630V
10	1	C15	CD100pF-1KV
11	3	C16, C17, C20	XX-1000/63
12	1	C18	XX-CP1KpF-630V
13	1	C19	CP1KpF-1600V
14	8	C21, C24, C26, C29, C30, C40, C45, C46	CD0.1uf
15	1	C22	4K7
16	2	C22, C35	XX
17	1	C28	CD.1uF
18	1	C31	CP1KpF
19	2	C32, C33	CP.1uF
20	1	C34	CP47KpF
21	1	C36	YXF47/63
22	3	C37, C38, C39	1000/63
23	2	C41, C42	CD2K2-Y2
24	1	C44	CP47KpF-630V
25	1	C47	CD10KpF 1KV
26	1	C48	470/25
27	1	C49	CD1KpF
28	2	C50, C51	CD1uf/50
29	1	C54	0.1uF-X2
30	1	C55	CD4K7pF
31	2	DZ1, DZ2	15V-1W
32	1	D1	GSIB2540
33	3	D2, D3, D12	MUR460
34	1	D4	UF5407
35	1	D5	BYW99-200
36	7	D6, D8, D13, D14, D15, D16, D17	BYV27-200
37	1	D7	UF4007
38	1	D9	TL431
39	1	D10	20ETS08
40	1	D11	ISL9R1560P2
41	1	D18	XX-15HFA60PB
42	9	FIX1, FIX2, FIX3, FIX4, FIX5, FIX6, FIX7, FIX8, F9	FIX35
43	1	FS1	6.3AT
44	2	F1, F4	2x220uH
45	1	F2	TMC-PSL1000
46	1	JP1	Piazzole
47	1	JP2	PRESA SHURT
48	1	JP3	STRIP F7P
49	2	JP4, JP11	X2.5MSF
50	1	JP5	KRA7
51	1	JP7	STRIP F6P
52	1	JP8	MOLEX 4
53	1	JP9	MOLEX-4
54	1	JP12	JUMPER
55	1	JP13	STRIP-TOR 4X2
56	1	JP14	STRIP TOR 4X2
57	1	J1	CON16AP
58	1	L1	SA10x6x4.5
59	1	L2	T-PSL600
60	1	L3	BFV0710
61	1	L4	VK200

Item	Quantity	Reference	Part
62	1	L5	TPFC-PSL600
63	1	OC1	K1010A
64	2	Q1, Q2	STP20MN50
65	1	Q3	45MN50
66	1	RV3	140V-62J
67	1	R1	OAR-R02-5W
68	2	R2, R40	5R-8A
69	1	R3	470K-2W
70	2	R5, R16	10K-4W
71	5	TR1, R6, R17, R22, R37	10K
72	1	R7	RXE185
73	1	R8	3K9
74	2	R9, R14	1M0
75	2	R10, R13	33K-2W
76	1	R11	5R6-2W
77	3	R12, R15, R25	100R-2W
78	2	R18, R38	10R
79	1	R19	2K49
80	1	R20	56K
81	1	R21	47K0
82	1	R23	3K0
83	1	R24	9K53
84	1	R26	1R5
85	2	R27, R32	22K-2W
86	2	R28, R33	390K
87	6	R29, R30, R31, R34, R35, R36	511K
88	1	R39	22R-2W
89	1	SW1	TL36W
90	1	T1	TSWTCH14
91	1	U1	LM7805CT

PSL600



Nome Progetto: TEX300-LCD		Pagina: 1 di 1	Size: A3
Autore: GP - REV.: J.BERTI	Data: 24/06/2006	Codice Progetto: 045	
Nome PC in Rete: \WTSRV\	Revisione: 1.0	Nome Parte: PFC CONTROL PSL 600	
File/Cartella: PSL600_CNT_R1.DSN	Autorizzazione:	Codice: PSL300	



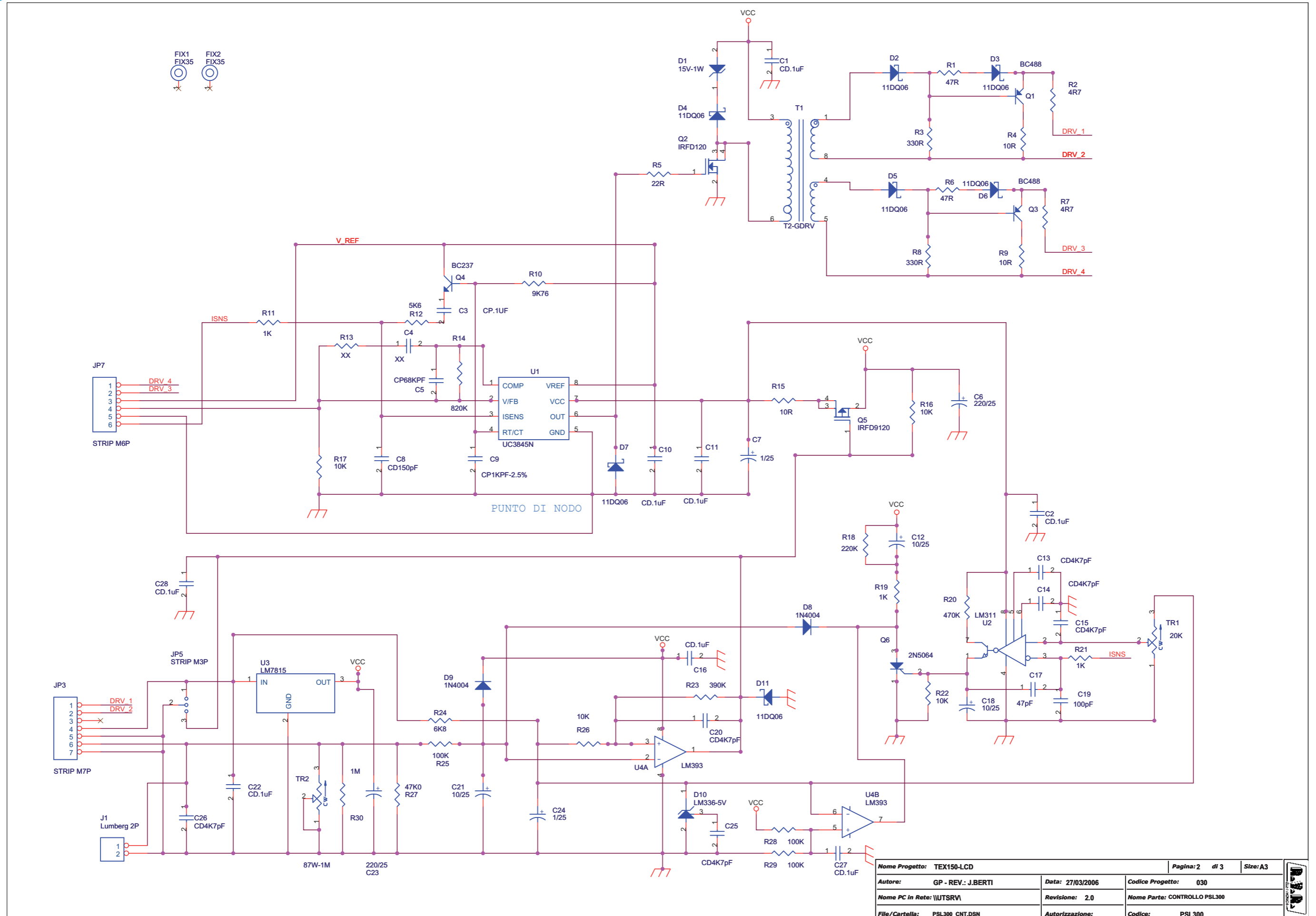
NOME PROGETTO: TEX300LCD	NOME PARTE: Control Card
AUTORE: U.T. - rev.: J. Berti	DATA: 23/03/2006
ARCHIVIAZIONE ELETTRONICA: "CARTELLA PROGETTI" SU "UT_SRV"	REVISIONE: 1.0
MATERIALE: /	SCALA: 2:1
TRATTAMENTO: /	SIZE: A4
PROFILO: /	PAGINA: 1 DI 1
STATO: /	CODICE DISEGNO: PSL600

PSL600

Revised: Thursday, October 12, 2006
Revision:

Item	Quantity	Reference	Part
1	1	C1	CD0.22uF
2	1	C2	CD330pF-NPO
3	1	C3	CP1kPF
4	1	C4	330pF NPO
5	1	C5	CP0.1uF
6	5	C6, C7, C15, C19, C24	CE1/25
7	2	C8, C23	CT2.2/25
8	1	C9	CD.22uF
9	1	C10	CD560pF-NPO
10	2	C11, C17	CD0.1uF
11	1	C12	CD1KpF
12	1	C13	CP33KpF
13	1	C20	CD100pF-NPO
14	1	C21	CE10/25
15	4	D2, D3, D4, D10	BYM13-40
16	1	D8	LL4148
17	1	JP5	STRIP3 90
18	2	JP13, JP14	STRIP 8
19	1	Q1	BC487
20	1	Q2	BC488
21	1	Q3	BC847
22	1	Q4	BC857
23	2	R1, R22	47R
24	1	R2	22R
25	2	R3, R4	4K12
26	2	R5, R23	10R
27	2	R6, R9	2K2
28	2	R7, R18	30K
29	1	R8	15K
30	1	R10	180K
31	1	R11	390R
32	1	R12	20K0
33	2	R14, R17	100K
34	1	R15	18K0
35	1	R16	10K7
36	1	R19	10K
37	1	R20	3K3
38	1	R24	47K
39	1	R25	1M
40	1	TR2	3106X-10K
41	1	U1	UCC3818D

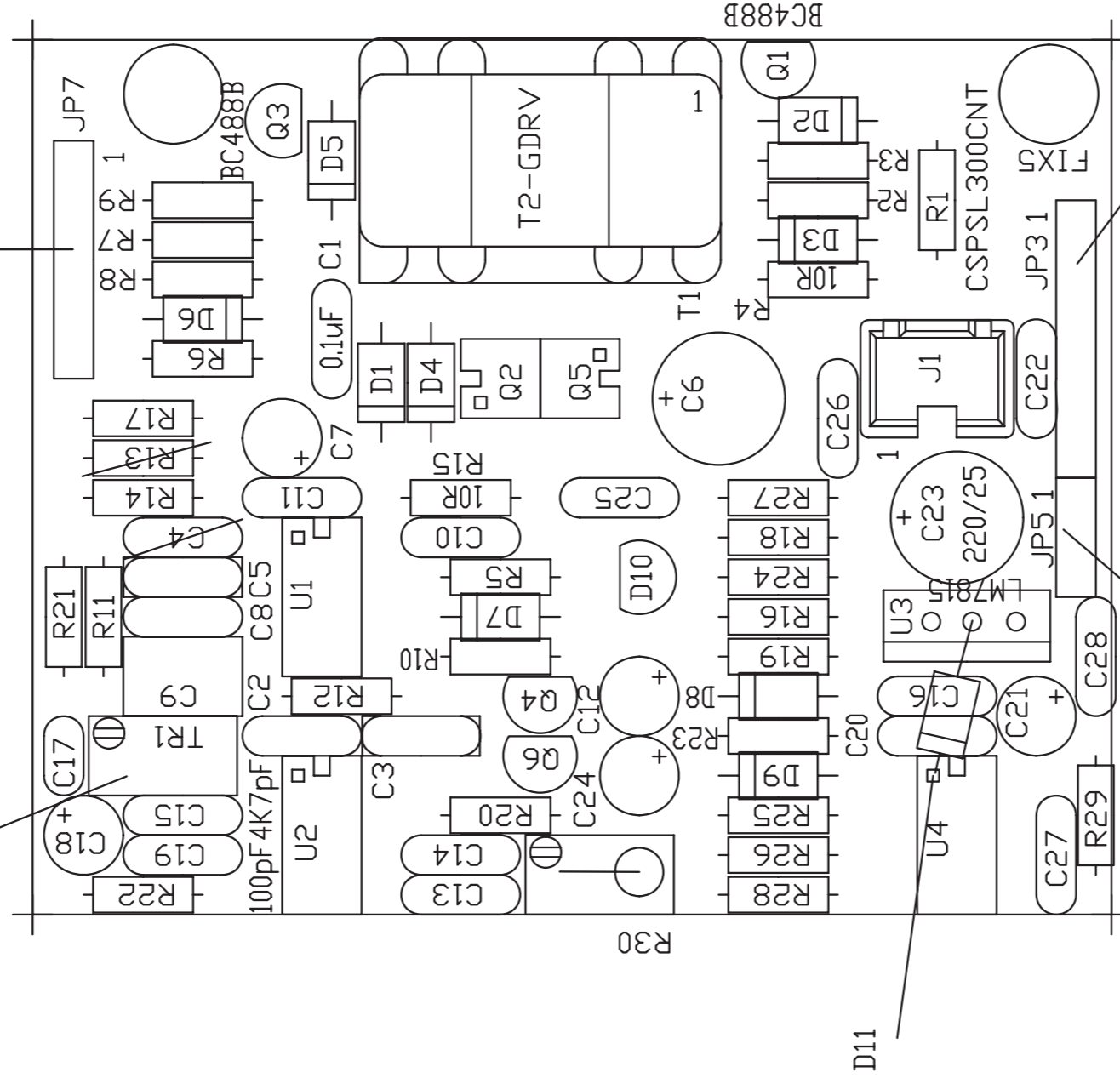
PSL600



Nome Progetto: TEX150-LCD		Pagina: 2 di 3	Size: A3
Autore: GP - REV.: J.BERTI	Data: 27/03/2006	Codice Progetto: 030	
Nome PC in Rete: \UTSRV\	Revisione: 2.0	Nome Parte: CONTROLLO PSL300	
File/Cartella: PSL300_CNT.DSN	Autorizzazione:	Codice: PSL300	

MONTARE LATO SALDATURE
STRIP 6 POLI 16 mm

ANTI DRARIO ABBASSA LIMITAZIONE



MONTARE LATO SALDATURE
STRIP 7 POLI 16 mm

MONTARE LATO COMPONENTI
STRIP 3 POLI 6mm

LAVARE STRIP

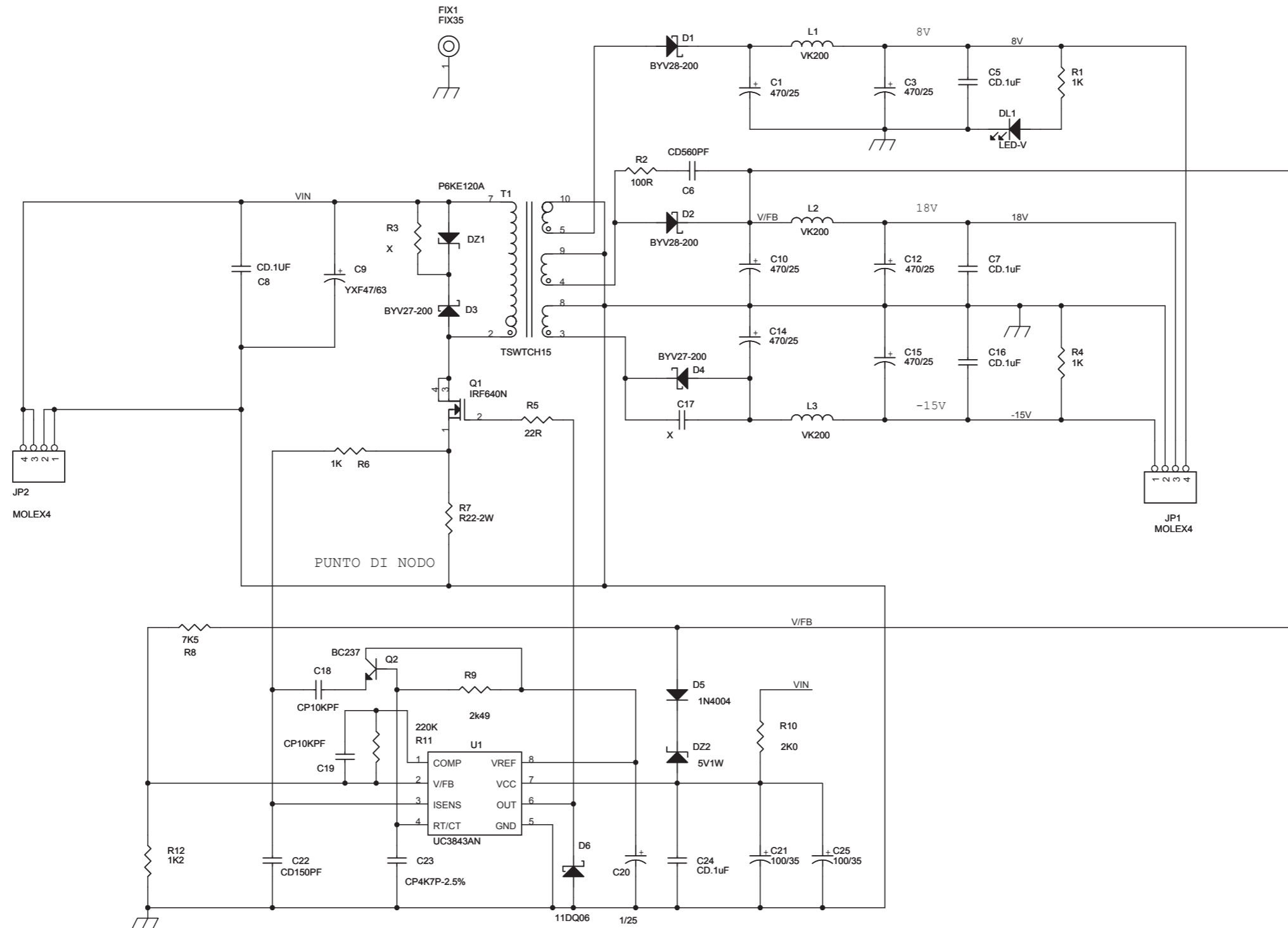
	NOME PROGETTO: TEX150LCD	NOME PARTE: Control Card
AUTORE: U.T. - rev.: J. Berti	DATA: 27/03/2006	REVISIONE: 2.0
ARCHIVIAZIONE ELETTRONICA: "CARTELLA PROGETTI" SU "UT_SRY"	CODICE PROGETTO: 030	SCALA: 2:1
MATERIALE: /	TRATTAMENTO: /	PROFILO: /
		STATO: /
		SIZE: A4
		PAGINA: 2 DI 3

PSL600

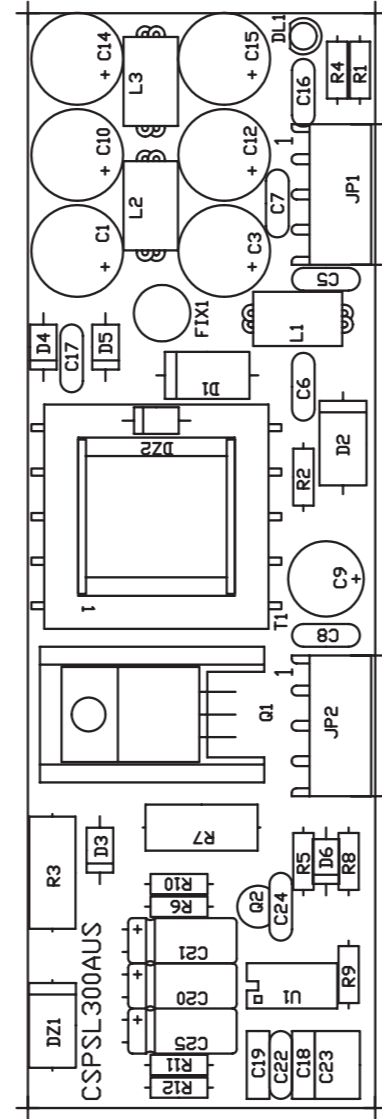
PSL300
 POWER SUPPLY +18V1.5A 8V1A 15V 0.2A
 Revised: 27/03/2006
 Revision: 2.0

Item	Quantity	Reference	Part
1	8	C1C2C10C11C16C22C27C28	CD.1uF
2	1	C3	CP.1UF
3	2	C4R13	XX
4	1	C5	CP68KPF
5	2	C6C23	220/25
6	2	C7C24	1/25
7	1	C8	CD150pF
8	1	C9	CP1KPF-2.5%
9	3	C12C18C21	10/25
10	6	C13C14C15C20C25C26	CD4K7pF
11	1	C17	47pF
12	1	C19	100pF
13	1	D1	15V-1W
14	7	D2D3D4D5D6D7D11	11DQ06
15	2	D8D9	1N4004
16	1	D10	LM336-5V
17	2	FIX1FIX2	FIX35
18	1	JP3	STRIP M7P
19	1	JP5	STRIP M3P
20	1	JP7	STRIP M6P
21	1	J1	Lumberg 2P
22	2	Q3Q1	BC488
23	1	Q2	IRFD120
24	1	Q4	BC237
25	1	Q5	IRFD9120
26	1	Q6	2N5064
27	2	R1R6	47R
28	2	R2R7	4R7
29	2	R3R8	330R
30	3	R4R9R15	10R
31	1	R5	22R
32	1	R10	9K76
33	3	R11R19R21	1K
34	1	R12	5K6
35	1	R14	820K
36	4	R16R17R22R26	10K
37	1	R18	220K
38	1	R20	470K
39	1	R23	390K
40	1	R24	6K8
41	3	R25R28R29	100K
42	1	R27	47K0
43	1	R30	1M
44	1	TR1	20K
45	1	TR2	87W-1M
46	1	T1	T2-GDRV
47	1	U1	UC3845N
48	1	U2	LM311
49	1	U3	LM7815
50	1	U4	LM393

PSL600



Nome Progetto: TEX300-LCD		Pagina: 1 di 1	Size: A3
Autore: GP - REV.: J.BERTI	Data: 24/03/2006	Codice Progetto: 045	
Nome PC in Rete: \UITSRV\	Revisione: 1,0	Nome Parte: POWER SUPPLY +18V1A 8V0.5A 15V 0.2	
File/Cartella: PSL600_AUS.DSN	Autorizzazione:	Codice: PSL600	



	NOME PROGETTO: TEX300LCD	NOME PARTE: Auxiliary Power Supply Card
AUTORE: U.T. - rev.: J. Berti	DATA: 21/03/2006	REVISIONE: 1.0
ARCHIVIAZIONE ELETTRONICA: "CARTELLA PROGETTI" SU "UT_SRV"	CODICE PROGETTO: 045	CODICE DISEGNO: PSL600
MATERIALE: /	TRATTAMENTO: /	PROFILO: /
		STATO: /
		SCALE: 2:1
		SIZE: A4
		PAGINA: 1
		DI: 1

PSL600

Revised: Friday, October 13, 2006
Revision:

Item	Quantity	Reference	Part
1	6	C1, C3, C10, C12, C14, C15	470/25
2	5	C5, C7, C8, C16, C24	CD.1uF
3	1	C6	CD560PF
4	1	C9	YXF47/63
5	2	R3, C17	X
6	2	C18, C19	CP10KPF
7	1	C20	25-gen
8	2	C21, C25	100/35
9	1	C22	CD150PF
10	1	C23	CP4K7P-2.5%
11	1	DL1	LED-V
12	1	DZ1	P6KE120A
13	1	DZ2	5V1W
14	2	D1, D2	BYV28-200
15	2	D3, D4	BYV27-200
16	1	D5	1N4004
17	1	D6	11DQ06
18	1	FIX1	FIX35
19	2	JP1, JP2	MOLEX4
20	3	L1, L2, L3	VK200
21	1	Q1	IRF640N
22	1	Q2	BC237
23	3	R1, R4, R6	1K
24	1	R2	100R
25	1	R5	22R
26	1	R7	R22-2W
27	1	R8	7K5
28	1	R9	2k49
29	1	R10	2K0
30	1	R11	220K
31	1	R12	1K2
32	1	T1	TSWTCH15
33	1	U1	UC3843AN