

## FM Receiver

### Phase equalization

For correct reception of the digital signal, audio section phase equalization must be Off.

With an R.V.R. receiver, move jumper JP5 on the Audio Process Card to position 2-3 (Figure 1).

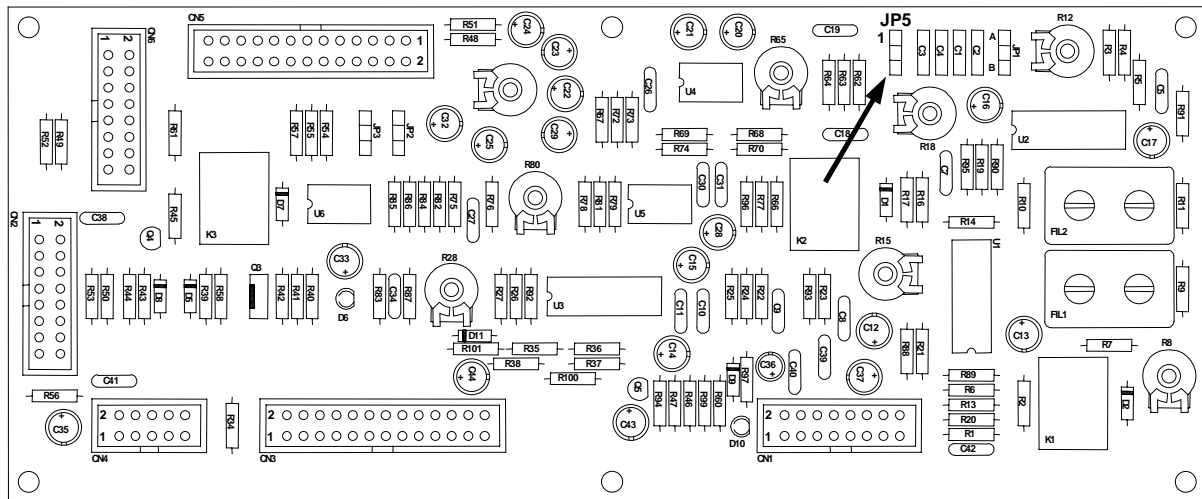


Figure 1

### Passband (DRX/4 only)

The DTX/4 – DRX/4 system requires a reception band which is noticeably bigger than that required by the DTX/2 – DRX/2 system.

With an R.V.R. receiver, remove the ceramic filters FC1 and FC2 from the 70 MHz IF Card (Figure 2), substituting them with filters with 470 pF capacity.

### Fine tuning

Adjust the tuning coils of the intermediate frequency stage to obtain a signal at the receiver MPX output which is as similar as possible to the signal at the DTX output.

This operation is necessary with a DTX/4 – DRX/4 system, but may not be required when using a DTX/2 – DRX/2 system.

With an R.V.R. receiver, the coils to be adjusted are TR1 and TR2 on the 70 MHz IF Card (Figure 2).

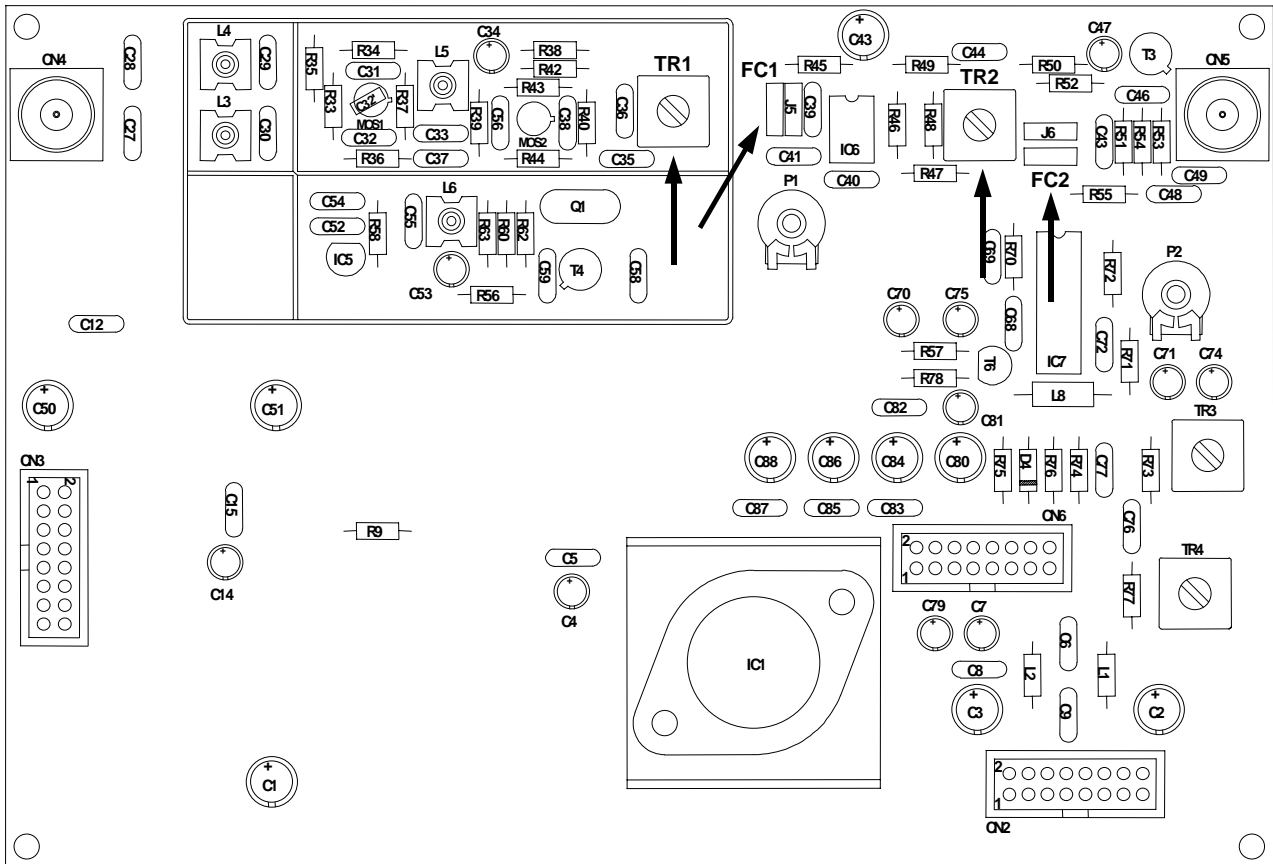


Figure 2

**Output level**

Adjust the receiver MPX output level so that the amplitude is 2.2 V<sub>pp</sub>.

**Baseband output**

Connect the receiver MPX output to the DRX baseband input (I/O).